



**REGIONAL SPECIALISED METEOROLOGICAL CENTRE-TROPICAL CYCLONES, NEW DELHI  
TROPICAL WEATHER OUTLOOK**

**DEMS-RSMC TROPICAL CYCLONES NEW DELHI DATED 17.06.2024**

**TROPICAL WEATHER OUTLOOK FOR NORTH INDIAN OCEAN (THE BAY OF BENGAL AND THE ARABIAN SEA) VALID FOR NEXT 168 HOURS ISSUED AT 0600 UTC OF 17.06.2024 BASED ON 0300 UTC OF 17.06.2024.**

**BAY OF BENGAL:**

YESTERDAY'S CYCLONIC CIRCULATION OVER SOUTHWEST & ADJOINING WESTCENTRAL BAY OF BENGAL BETWEEN 3.1 KM & 7.6 KM ABOVE MEAN SEA LEVEL BECAME LESS MARKED AT 0300 UTC OF TODAY, THE 17TH OF JUNE 2024. SCATTERED LOW AND MEDIUM CLOUDS WITH EMBEDDED ISO LATED INTENSE TO VERY INTENSE CONVECTION LAY OVER NORTH BAY OF BENGAL, SOUTHWEST & WESTCENTRAL BAY OF BENGAL (MINIMUM CLOUD TOP TEMPERATURE -85°C) AND MODERATE TO INTENSE CONVECTION LAY OVER EASTCENTRAL & SOUTHEAST BAY OF BENGAL, SOUTH ANDAMAN SEA AND GULF OF MARTABAN. SCATTERED LOW AND MEDIUM CLOUDS WITH EMBEDDED WEAK TO MODERATE CONVECTION LAY REST OF BAY OF BENGAL.

**\*PROBABILITY OF CYCLOGENESIS (FORMATION OF DEPRESSION) DURING NEXT 168 HRS:**

24 HOURS	24-48 HOURS	48-72 HOURS	72-96 HOURS	96-120 HOURS	120-144 HOURS	144-168 HOURS
NIL	NIL	NIL	NIL	NIL	NIL	NIL

**\*NOTE: EVERY 24HR FORECAST IS VALID UPTO 0300 UTC (0830 IST) OF NEXT DAY**

**ARABIAN SEA:**

A CYCLONIC CIRCULATION LAY OVER SOUTHEAST ARABIAN SEA OFF KERALA COAST AT 0.9 KM ABOVE MEAN SEA LEVEL AT 0300 UTC OF TODAY, THE 17TH OF JUNE 2024. A CYCLONIC CIRCULATION LAY OVER NORTHEAST ARABIAN SEA AND ADJOINING SAURASHTRA AT 3.1 KM ABOVE MEAN SEA LEVEL AT 0300 UTC OF TODAY, THE 17TH OF JUNE 2024. SCATTERED LOW AND MEDIUM CLOUDS WITH EMBEDDED MODERATE TO INTENSE CONVECTION LAY OVER GULF OF KUTCHH, EASTCENTRAL & SOUTHEAST ARABIAN SEA, LAKSHADWEEP ISLANDS AREA AND COMORIN AREA. ISOLATED LOW AND MEDIUM CLOUDS WITH EMBEDDED WEAK TO MODERATE CONVECTION LAY OVER WESTCENTRAL & SOUTHWEST AREA.

**\*PROBABILITY OF CYCLOGENESIS (FORMATION OF DEPRESSION) DURING NEXT 168 HRS:**

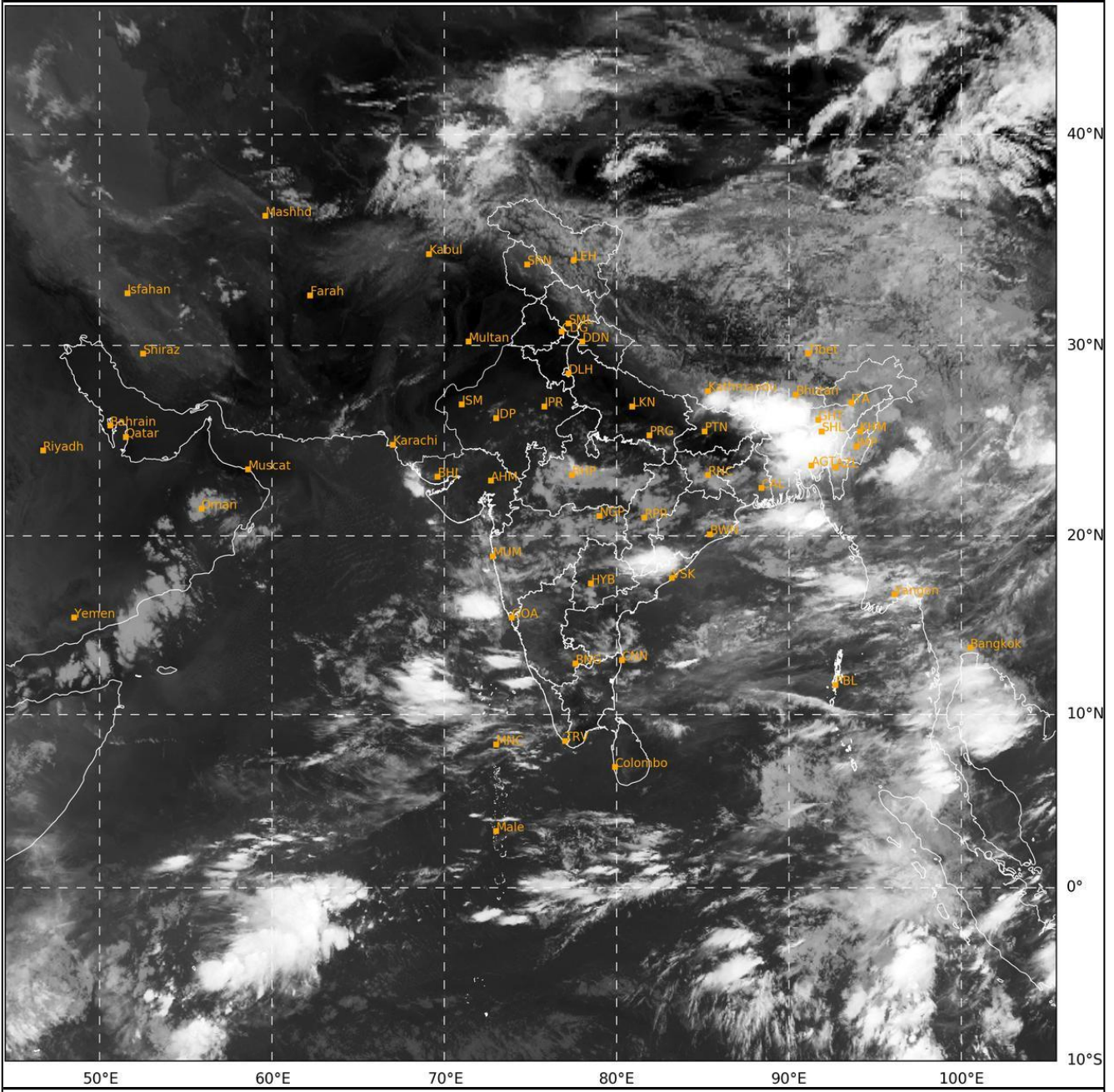
24 HOURS	24-48 HOURS	48-72 HOURS	72-96 HOURS	96-120 HOURS	120-144 HOURS	144-168 HOURS
NIL	NIL	NIL	NIL	NIL	NIL	NIL

**\*NOTE: EVERY 24HR FORECAST IS VALID UPTO 0300 UTC (0830 IST) OF NEXT DAY**

REMARKS: NIL

SAT : INSAT-3D IMG  
IMG\_TIR1 10.8 um  
L1C Mercator

17-06-2024/(0300 to 0327) GMT  
17-06-2024/(0830 to 0857) IST



IMD, DELHI

Cloud distribution: (a) Isolated: <25%, Scattered:25-50%, Broken: 51-75%, Solid:>75%, Convection Intensity: (a) Weak: Cloud Top Temperature (CTT) >-25°C, (b) Moderate: CTT: - 25°C to -40°C, (c) Intense: CTT: - 41°C to -70°C and (d) Very Intense: : Less than -70°C  
PROBABILITY OF CYCLOGENESIS (FORMATION OF DEPRESSION):NIL: 0%, LOW: 1-33%, , MODERATE: 34-66% AND HIGH: 67-100%  
This is a guidance Bulletin for WMO/ESCAP Panel Member countries. Visit respective National websites for Country specific Bulletins